

# ● SMALL BAG WEIGH-FEEDING MACHINE - CV50 ●



## OPERATING PRINCIPLE

The **vertical weighing & feeding machine CV100** is gravimetric feeding equipment designed to deliver automatically out of the "weight" set point a specific quantity of product into the bags.

The Sautelma Rotolok CV model weighing & bagging machine can be used for all type of granular and powdered free flowing materials like cereals, fertilizers, plastics, sugar, flour, pet food, washing powder etc...

The CV100 can run as Weight hopper scale and be used for production control by totalizing of bulk materials.

The weighed hopper is usually filled by screw feeder, vibrating trough feeder, belt feeder or simply by gravity through a dosing valve .

## COMPOSITION AND CHARACTERISTICS

Sautelma DBB 1000 weighing and bagging machine consists of three main parts :

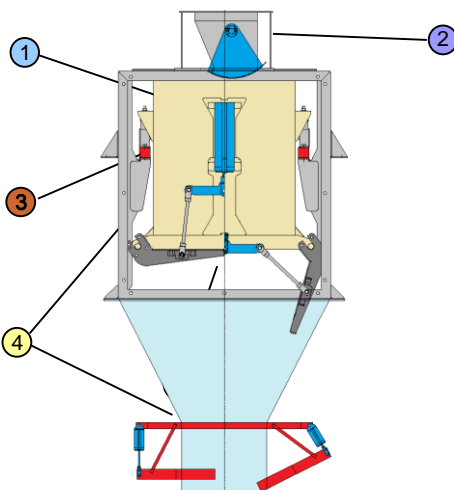
- A high/low throughput extraction and feeding system with its own pneumatically controlled dosing valve
- Weighing hopper, standard capacity: 25, 75 and 140 L, stainless steel manufacturing with emptying pneumatic gate
- Weighing system with two high accurate stainless steel load cells, IP67
- Digital signal processing
- Control command cubicle with electronics device for weighing and processing of statistics data
- Discharge chute with dedusting connection

**Weighing hopper** in stainless steel with:

- Integral drain by two flaps valve controlled by pneumatic cylinder,
- Protective enclosure with 2 dedusting flanges
- Outlet chute with bags fastening device

**Weighing system** by 2 strain gauge load cells, IP 68, Stainless Steel, commercial accuracy, 5000 divisions, OIML approved.  
Digital signal processing unit for

**Supporting frame** in the form of protective casing, incorporating the dosing valve on the upper part, weighing hopper in the middle and emptying hopper and bags hanging device.



**Material feeding** can be done by:

- Helmet dosing valve or
  - Single or double screw feeder or
  - Vibrating trough feeder
  - Belt feeder
- Adjustable "big flow and small flow"

**Control command cubicle** with MINISMART weighing digital electronics controller.  
Very friendly operator interface including :

- LED type weight display
- LCD display for conversational mode
- Multifunction keyboard

**Pneumatique control panel**

The panel will house, solenoid valves, pressure switch and pressure regulator

## TECHNICAL SPECIFICATION

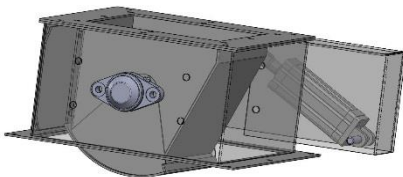
Weighing range	10 to 100 Kg
Speed	6 to 8 weights/mn by head Up to 15 weights/mn with a 2 heads machine
Average accuracy	+/- 0,1 %
Storage capacity	60 different products
Power supply	220/380V/single /50Hz (400 VA)
Pneumatic supply	6 bars (10 Nm <sup>3</sup> /H)
Dust removal	800 m <sup>3</sup> /H

## AVANTAGES

- Modular design,
- High accuracy weighing system,
- Digital processing of weight signal with auto zero
- Convivial and ergonomic operator's interface with its tree structure menus.
- All the Inputs and Outputs and the programmes can be parameterized and can be adjusted to each user's requirements.
- Fast and easy commissioning.



### Standard filing by pneumatic helmet valve



### Options

- Teflon coating of the parts in contact with the product
- Fluidification of the extraction and feeding compartment
- Mobile support of the weighing block and the weighed hopper
- Printer to issue production statistics
- Vibrating tube for granulous and powdery product

### Integrated solutions

- Automatic or semi-automatic bagging line
- Automatic bag conformer & presenter
- Bag closing unit with sewing head
- Bag closing unit by heat sealer
- Handling conveyors
- Checkweighers
- Dust removal station

### Control command equipment

- Control command cabinet with:
  - Programmable PLC (OPTION)
  - Electrical protection of various parts
  - Connecting terminal
- Sautelma-Rotolok MINISMART digital electronic
  - Modular design, IP 65 protection
  - 16/32 bits microprocessor
  - Weight signal processing and digital screening.
- Data display and operator interface including:
  - A high visibility LED type weight display
  - A LCD display unit (20 characters and 4 lines) for the conversational mode.
  - A multifunction alphanumeric keyboard
- Programs
  - Memorisation of 60 various products with their parameters
  - Continuous auto zero to guarantee stability of initial zero
  - Automatic zero and calibration
  - Permanent control of mean
  - Automatic correction of trend
  - Development of production statistics
  - Access to programming via a password.

### Other filing equipment



### Automatic bagging line for open mouth bags

